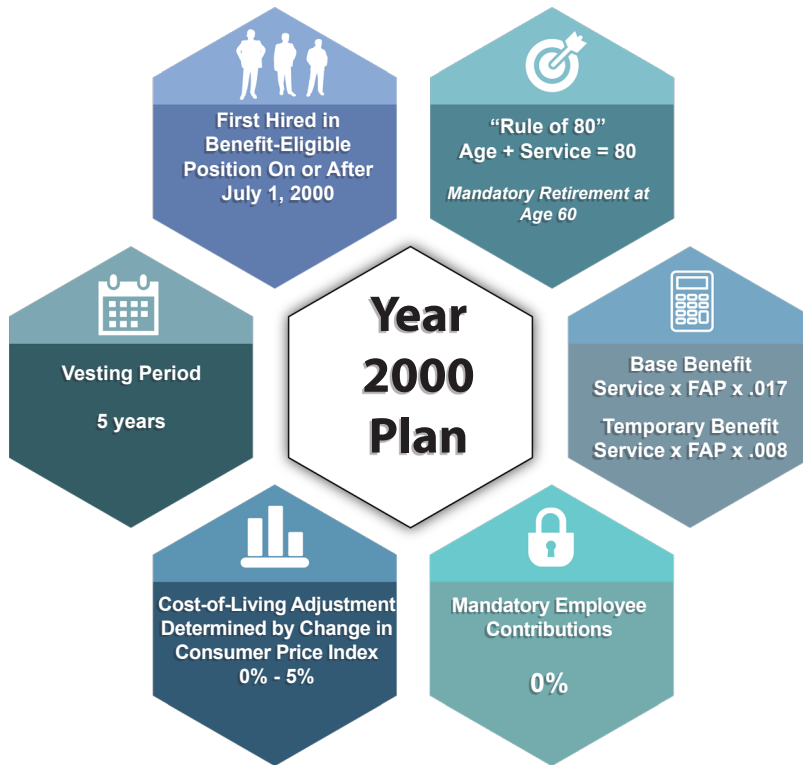


Year 2000 Plan

Uniformed members hired for the first time on or after July 1, 2000, but prior to January 1, 2011



MPERS is a defined benefit (DB) retirement plan for employees of the Missouri Department of Transportation and the Missouri State Highway Patrol. As a member of a DB plan, your future retirement benefit is not based on how much you contribute to the plan, it is based on a formula.



Below is an example of the potential value and impact the MPERS retirement benefit has on your future. Together with social security and personal savings, your MPERS benefit will help you have a secure and reliable retirement.

Assumptions Used		
Service 25 years	Final Average Pay (FAP) \$4,000	Age 55
Base Benefit Multiplier .017		Temporary Benefit Multiplier .008
Average COLA 1.5%	Employee Contributions \$0	Length of Retirement 30 years
Benefit Calculations		
Service x Final Average Pay (FAP) x Multiplier		
25	X \$4,000	X .017 = \$1,700 Initial Base Benefit
25	X \$4,000	X .008 = \$800 Initial Temporary Benefit
\$1,700 Base Benefit For Life + \$800 Temporary Benefit Until Age 62 = \$2,500 Total Monthly Benefit		
Total Benefit Received Over 30 Years \$836,089.84		
Total Employee Contributions \$0		

The formula uses total **service credit**, **final average pay (FAP)**, and a **multiplier** set by law. **Final average pay** is the average of your highest 36 consecutive months of pay. Using this formula, MPERS produces a **base benefit** amount that retirees receive every month for the rest of their lives. In addition to the **base benefit**, those who qualify for normal retirement and retire directly from active service prior to age 62 will receive a **temporary benefit** that is similarly calculated with a different multiplier. The temporary benefit is received until a member reaches age 62.

Service credit can include years and months of employment, unused sick leave, and purchased or transferred service.

As a retiree, you will receive an annual **cost-of-living adjustment (COLA)** every year. This adjustment ranges from zero to five percent and is determined by the Consumer Price Index (CPI-U).

As a member of the Year 2000 Plan, no **employee contributions** are required. Your retirement is funded by MPERS and your employer.